



College Updates

College of Pharmacy


Bob Brueggemeier
Dean and Professor

October 2, 2009

Outline

1. Academic Programs
2. Faculty
3. Finances
4. 2009-10



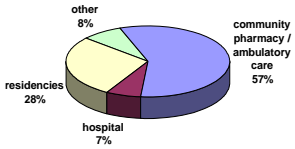
Academic Programs



PharmD Graduates in 2009

A total of 116 entry-level PharmD students received the Doctor of Pharmacy degree on June 14, 2009. This was our seventh ELPD graduating class.

Distribution of ELPD Graduates




NABPLEX 100% pass
MPJE 100% pass

A total of 19 NTPD students received the PharmD degree in 2008-09 academic year.

Pharm.D. Program (ELPD)

2009-10 Enrollment in ELPD:

PharmD 1	127	(courses)
PharmD 2	131	(courses)
PharmD 3	123	(courses)
PharmD 4	117	(rotations)
TOTAL	498	




Autumn Quarter 2009:
resident tuition & fees = \$16,200
non-resident tuition & fees = \$32,808

Combined degree programs:
PharmD/MS and PharmD/PhD
PharmD/MBA
PharmD/MPH

Student Enrollment Statistics

PharmD class of 128 students admitted in Autumn 2008:

- mean cumulative grade-point average = 3.56 (M/S = 3.45)
- mean composite PCAT score = 80th percentile
- 97 % had previously earned an academic degree
- 54 % are female
- 23 % are from minority groups
 - 5 % African American
 - 17 % Asian American
- 66 % are residents of the state of Ohio
- 57 % completed pre-pharmacy studies at Ohio State
 - 24 % from BSPS program; 14 % from EAP



NTPD Program Statistics

- Total NTPD students = 159
 - Overall retention = 79%
 - Average age = 42
 - Average years from BS = 18
- Current enrollment = 42 students
- Number of NTPD graduates = 117
 - 42% OSU alumni
 - 74% Ohio residents

The NTPD has successfully enabled practicing pharmacists to enhance their clinical skills to the PharmD.

Areas of Pharmacy Practice

Area	Percentage
retail pharmacy	27%
hospital pharmacy	32%
ambulatory care	13%
managed care	18%
pharma companies	6%
other	4%

BSPS Program

98 BSPS students graduated in 2008-09

39 students graduated Honors:

- 19 Cum Laude (3.50-3.69)
- 16 Magna Cum Laude (3.70-3.89)
- 4 Summa Cum Laude (3.90 or higher)
- 4 Distinction and Honors (Senior Honors Thesis)

Pharmacy House

BSPS students (Autumn 2009):

127	freshmen rank
81	sophomore rank
110	junior rank
154	senior rank
472	total

54 EAP students

Graduate Program Enrollment

Medicinal Chemistry & Pharmacognosy	28
Pharmaceutics	23
Pharmacology	7
Pharmacy Administration	4
Translational Sciences	1
MS in Health Systems Pharmacy	10
	73
Interdisciplinary programs	8

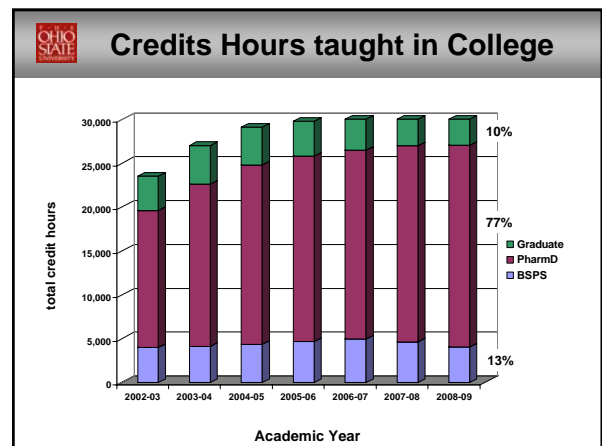
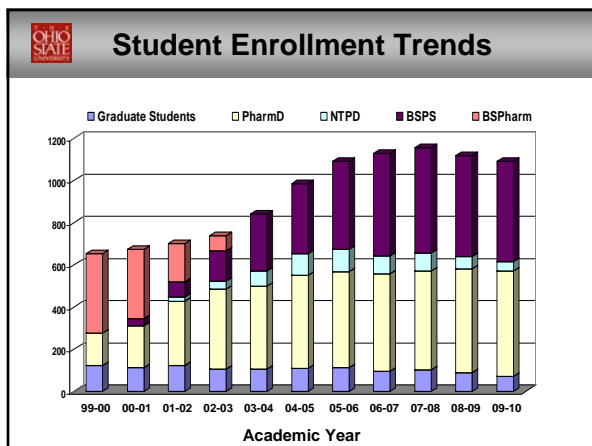
In the 2008-09 academic year:
 18 students obtained the PhD degree
 14 students obtained an MS degree

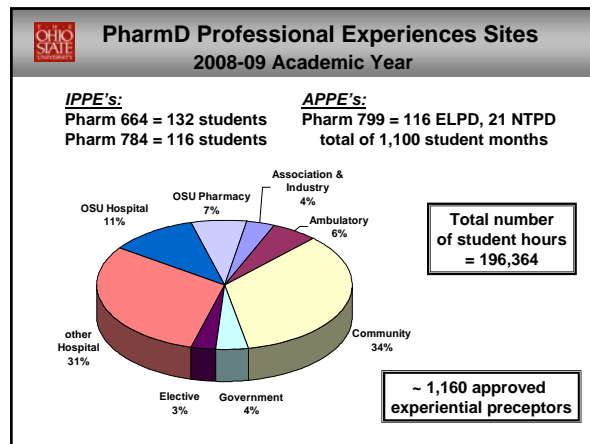
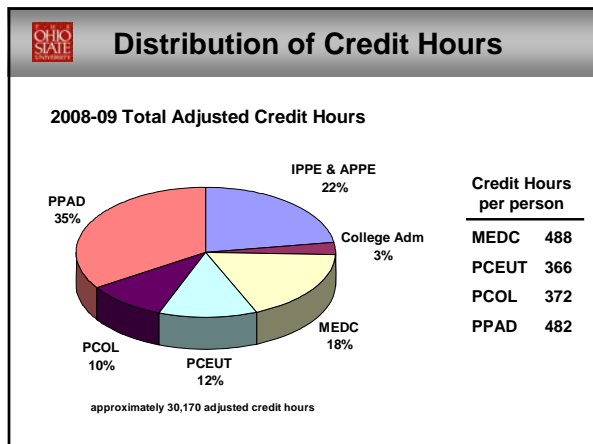
Academic Programs

Enrollments as of September 2009:

BS Pharm Sci	472
Residential PharmD program	497
• 116 P-4 students	
Nontraditional PharmD (NTPD)	42
Graduate Programs	73
TOTAL	1,085

Tenure-track Faculty, Clinical-track Faculty, and Teaching Professionals = 56





Faculty in College of Pharmacy

Current Faculty (individuals)

Division	Professor	Associate Prof.	Assistant Prof.	Instructional A&P	Totals
MedChem/Pcog	4 T	3 T	2 TT	1	10
Pharmaceutics	5 T	3 T	2 TT 1 RT	1	12
Pharmacology	4 T	2 T	1 TT	1	8
PPAD	3 T 1 CT	4 T 4 CT	2 TT 4 CT 1 RT	7	26
Totals	16 T 1 CT	12 T 4 CT	7 TT 4 CT 2 RT	10	56

T = tenured
TT = tenure-track
CT = clinical track
RT = research track

3 open searches at senior level
3 open searches at junior level

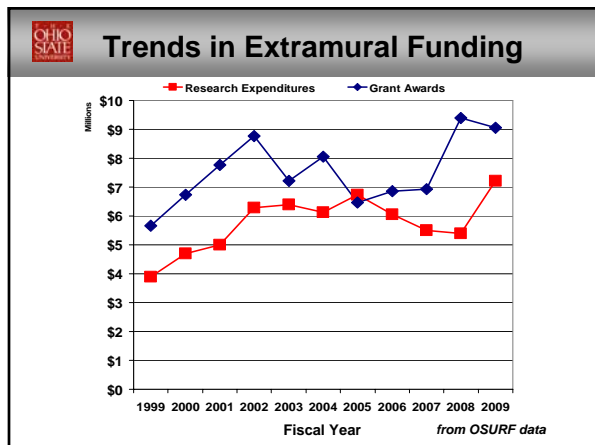
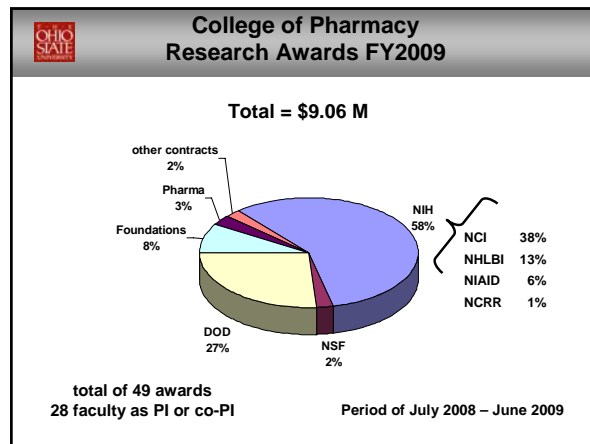
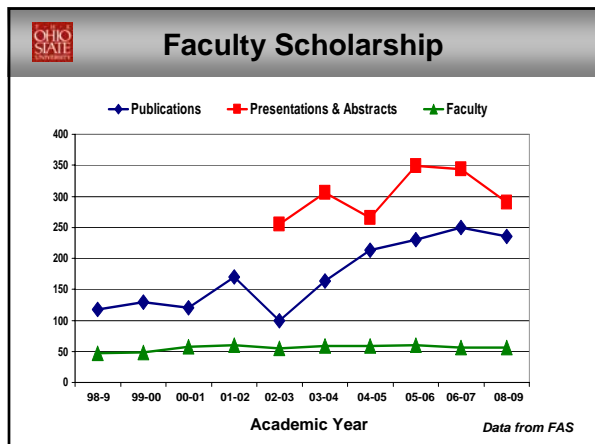
Faculty – National Honors

1 faculty	Institute of Medicine, National Academies of Science
8 faculty	AAAS Fellows, American Association for the Advancement of Science (+3 emeritus)
9 faculty	AAPS Fellows, American Association of Pharmaceutical Sciences (+6 emeritus)
2 faculty	ACCP Fellows, American College of Clinical Pharmacy (+1 emeritus)
5 faculty	APhA Fellows, American Pharmacist Association
3 faculty	ASHP Fellows, American Society of Health Systems Pharmacists
1 faculty	AHA Fellow, American Heart Association
1 faculty	AIHP Fellow, Academie Internationale d'Histoire de la Pharmacie

A total of 20 out of the current 33 senior faculty in the College of Pharmacy are Fellows of scientific organizations or professional pharmacy organizations.

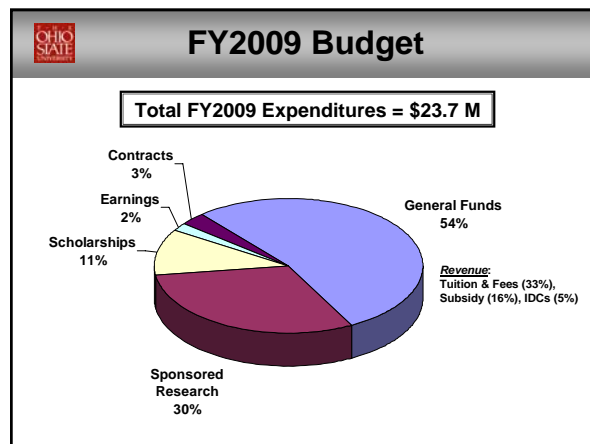
Recent Faculty Recognitions

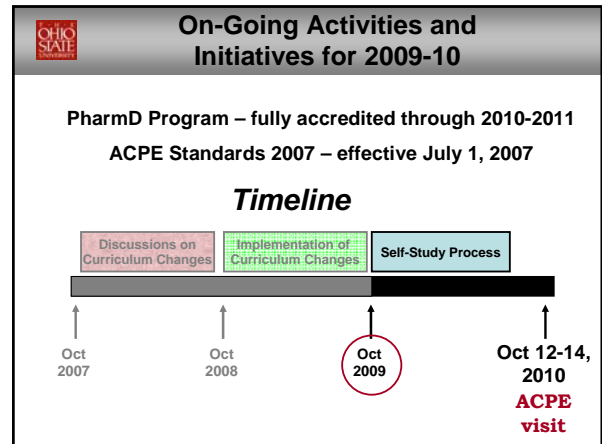
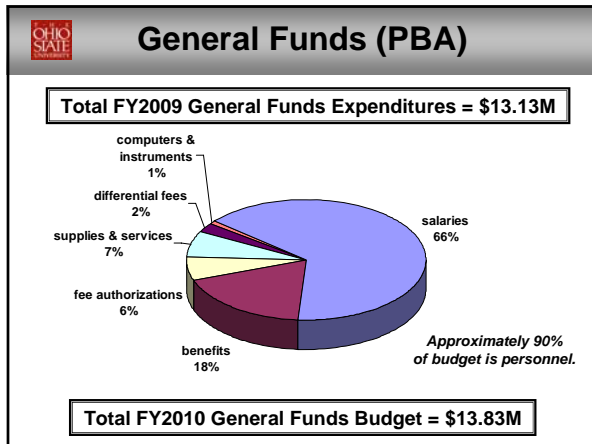
Prof. Marialice Bennett	APhA 2009 Gloria Niemeyer Francke Leadership Mentor Award Elected APhA President-elect
Dr. Cynthia Carnes	Fellow of the American Heart Association
Dr. James McAuley	Fellow of the American Pharmacists Association
Dr. Phyllis Grauer	Distinguished Achievement Award in Specialty Practice, APhA-APPM
Dr. Milap Nahata	2009 Paul F. Parker Medal, American College of Clinical Pharmacy
Dr. Robert Curley	Fellow of the American Association for Pharmaceutical Sciences
Dr. Douglas Kinghorn	2010 Norman R. Farnsworth Research Achievement Award from the American Society of Pharmacognosy



- ### Outreach & Engagement
- Innovative partnerships (Kroger Pharmacy, CNHC, Cardinal Health-Life Care Alliance).
 - Partnership with OSU Extension through *Partners for Promotion*.
 - *Generation Rx* – medication education to P-12 students, college students, and adult learners.
 - Pharmacy faculty and students are engaged in various service-learning activities.
 - Joint video conference course with Ohio University.
 - Enhanced global pharmacy education and research (Taiwan, Thailand, UK).
 - Provide professional continuing education.

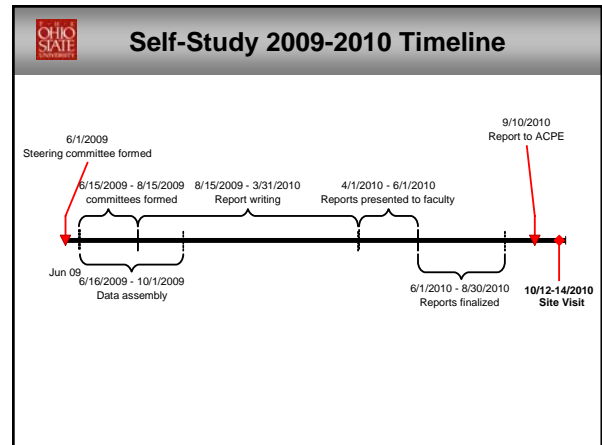
- ### OSU College of Pharmacy "Points of Pride"
- PharmD program ranked 5th in 2008 *US News & World Report*, Faculty productivity ranked 2nd in Pharmacy by Academic Analytics in 2007
 - PhD program received "high quality" rating in 2008 OSU Graduate School review
 - 29 Faculty received 40 national honors or recognitions
 - PharmD students: 100% NABLEX/MJPE pass, 10,528 hours of community outreach in 2008-09
 - > 6,500 alumni – many support students as preceptors, mentors, donors





Self-Study Committees

Steering Committee	Katherine Kelley (Chair) Sylvan Frank (Vice Chair)
Mission Planning, Assessment, Organization and Administration <i>Standards 1-3 & Standards 4-8</i>	Daren Knoell (Chair) Kristin Casper (Vice Chair)
Curriculum <i>Standards 9-15</i>	Kari Hoyt (Chair)
Students <i>Standards 16-23</i>	Heather Deters (Chair)
Faculty and Staff <i>Standards 24-26</i>	Cynthia Carnes (Chair)
Facilities and Resources <i>Standards 27-30</i>	Erin Delffs (Chair)



- ### Calendar Conversion
- University level:**
- Semester calendar approved by the University Senate on June 11, 2009
 - Advisory groups established (definition of credit hour, class times, course numbers, advising)
 - Interactions with partner institutions launched
 - Calendar conversion website established
 - Meetings with college representatives set
- College level:**
- Discussions at program committees; today's faculty meeting
 - Form an *ad hoc* committee for coordination